

CONTACT DETAILS OF THE BODY SUBMITTING THE QUALIFICATION FILE

Name and address of submitting body:

Furniture & Fittings Skill Council
407-408, 4th Floor, DLF City Court, MG Road
Sikenderpur, Gurgaon (Haryana)- 122 002
Tel: 91 124 4513900
Website: www.ffsc.in
Email Id: info@ffsc.in

Name and contact details of individual dealing with the submission

Name: Mr. Rahul Mehta
Position in the organization: Chief Executive Officer
Address if different from above: Address same as above
Tel number(s): +91-124-4513900
Email address: ceo@ffsc.in

Name: Ms Shabana Parween
Position in the organization: Senior Manager (Standards & Projects)
Address if different from above: Address same as above
Tel number(s): +91-124-4513900
Email address: shabana.parween@ffsc.in

List of documents submitted in support of the Qualifications File

1. Model Curriculum
2. Industry validations
3. Communication with Line Ministry
4. Documents supporting the need for this Qualification
 - Skill gap report conducted by BCG and FICCI
 - Skill gap report conducted by FFSC
 - Skill gap report conducted by KPMG
5. Affiliation and accreditation norms
 - Guidelines for accreditation, affiliation and continuous monitoring of training centres
 - Grading metrics for accreditation standards
6. Assessment guidelines
 - Assessment Strategy (derived from Model curriculum)
 - Evaluation matrix for Assessment Agencies
 - Criteria of empanelment of Assessment Agencies
7. Occupational Map and Career Progression Path
8. Functional Analysis

SUMMARY

1	Qualification Title:	<p>Carpenter (With Electives)</p> <ol style="list-style-type: none"> 1. Wooden Door & Windows with Frames 2. Wooden Cladding & Panelling 3. Wooden Flooring 4. Kitchen, Cabinets & Beds 5. Wooden House Structure 6. General Repairs and Maintenance
2	Qualification Code, if any	FFS/Q2203
3	NCO code and occupation	NCO-2015/7115.0300
4	Nature and purpose of the Qualification (Please specify whether Qualification is short term or long term)	<p>Nature of the Qualification: The Qualification is for the short-term training and Recognition of Prior Learning (RPL). (skilling, reskilling and upskilling)</p> <p>Purpose of the Qualification: The Qualification is developed:</p> <ul style="list-style-type: none"> - To skill the unemployed candidates by imparting the short-term skill development training - To allow people from other sectors to learn new skills to deal with changes in the workforce and market - To meet the requirement of the industry to provide entry-level semi-skilled manpower in this Qualification - To recognize the skills of the candidates who are already in this job role
5	Body/bodies which will award the Qualification	Furniture & Fittings Skill Council (FFSC)
6	The body which will accredit providers to offer courses leading to the Qualification	Furniture & Fittings Skill Council (FFSC)

7	Whether accreditation/affiliation norms are already in place or not, if applicable (if yes, attach a copy)	Yes Attached as supporting file
8	Occupation(s) to which the Qualification gives access	Furniture Installation (Carpenters and Installers), Furniture Production – (Joinery, Cabinet Making Assembly), and Furniture After-Sales
9	Job description of the occupation	The Carpenter plays the role of conducting physical site surveys and recce of the worksite. The person is responsible for reading and interpreting blueprints, drawings, and sketches to determine specifications and calculate requirements while making suitable preparations for the worksite. The individual will perform measuring, cutting, shaping, assembly, joining, and installing materials made of wood and wood substitutes into finished products using various hand tools and machines.
10	Licensing requirements	Not applicable
11	Statutory and Regulatory requirement of the relevant sector (documentary evidence to be provided)	Not applicable
12	Level of the Qualification in the NSQF	4
13	Anticipated volume of training/learning required to complete the Qualification	<p>Minimum: 480 Hours 360 + 120 hours (With one Elective)</p> <p>Maximum: 720 Hours 360 + 360 hours (With two Electives)</p> <p>Model Curriculum may be referred</p>

14	An indicative list of training tools required to deliver this Qualification	Model Curriculum may be referred (attached as supporting file)	
15	Entry requirements and recommendations and minimum age	ITI/ Govt recognised Diploma (1 Year in Carpentry) with 2 Years of relevant experience Or Graduate with 2 Years of relevant experience Or Certificate-NSQF (Level 3- Assistant Carpenter) with 2 Years of relevant experience Minimum job entry age 18 years Minimum Level of education for training in school: 10th class	
16	Progression from the Qualification (Please show Professional and academic progression)	Master Carpenter The occupational map is attached as an Supporting document which shows the professional progression.	
17	Arrangements for the Recognition of Prior Learning (RPL)	Yes	
18	International comparability where known (research evidence to be provided)	Not applicable	
19	Date of a planned review of the Qualification.	3 years post the date of NSQC approval NSQC date: 27 th Jan 2022 Validity till: 27 th Jan 2025	
20	The formal structure of the Qualification		
	Mandatory components		
	Title of component and identification code/NOSs/ Learning outcomes	Estimated size (learning hours)	Level
1	Bridge Module-1 Introduction	48	4

NSQF QUALIFICATION FILE**Approved in 15th NSQC, 27th January 2022**

2	FFS/N2210: Assist in client coordination, team supervision, and quality check of the project	32	4
3	FFS/N2211: Ensure proper material management and preparation of the worksite	32	4
4	FFS/N2212: Set-out, mark and fabricate the various components of the products at worksite	80	4
5	FFS/N2213: Perform assembly, finishing and installation of different components of the product at the worksite	96	4
6	FFS/N8203: Maintain health, safety, and greening practices at the worksite	20	4
7	FFS/N8204: Work effectively with the supervisors and co-workers involving gender and PwD sensitive practices	16	4
8	FFS/N8206: Undertake entrepreneurship and business development activities	24	4
9	Bridge Module-2 World Skills Competition and various opportunities	12	4
Sub Total (A)		360	
Elective components			
	Title of component and identification code/NOSs/ Learning outcomes	Estimated size (learning hours)	Level
1	Wooden Doors and Windows with Frames FFS/N2214: Perform fabrication, assembly, and installation of Wooden Doors and Windows with Frames	180	4

2	Wooden Cladding and Panelling FFS/N2215: Perform fabrication, assembly, and installation of Wooden Cladding and Panelling	120	4
3	Wooden Flooring FFS/N2216: Perform fabrication, assembly, and installation of Wooden Flooring	120	4
4	Kitchen, Cabinets, and Beds FFS/N2217: Perform fabrication, assembly, and installation of Kitchen, Cabinets, and Beds	180	4
5	Wooden House Structure FFS/N2218: Perform fabrication, assembly, and installation of a Wooden House Structure	180	4
6	General Repairs and Maintenance FFS/N2219: Perform General Repairs and Maintenance of the furniture at the worksite	120	4
Sub Total (B)		900	

Total (A+B)	Minimum duration with one Elective= 480 hours (360+120) Maximum duration with two Electives= 720 hours (360+360)	
--------------------	---	--

SECTION 1
ASSESSMENT

21	<p>Body/Bodies will carry out an assessment: The affiliated Assessment Bodies of Furniture & Fittings Skill Council will do the assessment. The list of Assessment Agencies is:</p> <p>SL. NO. ASSESSMENT AGENCY NAME</p> <table border="1"> <tr><td>1</td><td>ACE Assessments Pvt Ltd</td></tr> <tr><td>2</td><td>Demorgia Consulting Services Pvt Ltd</td></tr> <tr><td>3</td><td>IAssess Consultants LLP</td></tr> <tr><td>4</td><td>Induslynk Training Services Pvt. Ltd. (Mercer Mettl)</td></tr> <tr><td>5</td><td>Intouch Professional Services Private Limited</td></tr> <tr><td>6</td><td>Radiant Infonet Pvt. Ltd.</td></tr> <tr><td>7</td><td>SP Institute of Workforce Development Pvt Ltd (SPIWD)</td></tr> <tr><td>8</td><td>TAG Assessors Guild Pvt Ltd</td></tr> <tr><td>9</td><td>Virtual SaaS Pvt Ltd</td></tr> </table>	1	ACE Assessments Pvt Ltd	2	Demorgia Consulting Services Pvt Ltd	3	IAssess Consultants LLP	4	Induslynk Training Services Pvt. Ltd. (Mercer Mettl)	5	Intouch Professional Services Private Limited	6	Radiant Infonet Pvt. Ltd.	7	SP Institute of Workforce Development Pvt Ltd (SPIWD)	8	TAG Assessors Guild Pvt Ltd	9	Virtual SaaS Pvt Ltd
1	ACE Assessments Pvt Ltd																		
2	Demorgia Consulting Services Pvt Ltd																		
3	IAssess Consultants LLP																		
4	Induslynk Training Services Pvt. Ltd. (Mercer Mettl)																		
5	Intouch Professional Services Private Limited																		
6	Radiant Infonet Pvt. Ltd.																		
7	SP Institute of Workforce Development Pvt Ltd (SPIWD)																		
8	TAG Assessors Guild Pvt Ltd																		
9	Virtual SaaS Pvt Ltd																		
22	<p>How will the RPL assessment be managed, and who will carry it out?</p> <p>FFSC follows the guidelines of funding agencies for the RPL. Pradhan Mantri Kaushal Vikas Yojna (PMKVY), Ministry of Skill Development & Entrepreneurship and guidelines of Corporations under the Ministry of Social Justice and Empowerment are followed to implement respective RPL programs.</p> <p>The RPL will be based on the parameters and assessment criteria of the FFSC RPL assessment process as mentioned in the approved Qualification. The candidates with prior learning experience will be identified by FFSC/ affiliated Training Partner/ Skill Ambassadors/ or any other authorized body. In addition, the candidates will be identified by door-to-door mobilization/mobilization camps/ print and social media advertisements etc.</p> <p>The mobilized candidates will be counselled and oriented about the NSQF framework. The existing competency will be mapped with the appropriate NSQF level of the concerned job role for the assessment. The significant steps of RPL will be:</p> <ol style="list-style-type: none"> 1) Cluster mapping and identification of the suitable candidates 2) Mobilization, counselling, and pre-screening of the candidates 3) Candidate registration and batch creation 4) Conduct of RPL training program 5) Assessment after the training program by affiliated assessment agencies 6) Evaluation of assessment result 7) Issuance of the NCVET certificate to the successful candidate 																		

	<p>FFSC will carry out RPL for both funded and paid RPL programs under various categories according to the requirement. The categories of RPL which can be executed are:</p> <ol style="list-style-type: none"> 1. RPL Type -1 (in camps/ centres) 2. RPL Type-2 (in Employer premise) 3. RPL Type-3 (On-demand) 4. RPL Type-4 (Best-in-class employers) 5. RPL Type-5 (Online RPL)
23	<p>Describe the overall assessment strategy and specific arrangements which have been put in place to ensure that assessment is always valid, reliable, and fair and show that these are in line with the requirements of the NSQF.</p> <p>Empaneled Assessment Agencies will do the assessment. These assessors would be aligned to assess as per the laid down criteria. Only the TOA-certified Assessor is eligible to conduct the assessment.</p> <p>Assessment Agency would conduct assessment only at the training centers of Training Partner or designated testing centers authorized by FFSC.</p> <p>Each National Occupational Standard (NOS) has been assigned weightage. Therein each Performance Criteria in the NOS has been given marks for theory/ practical/ project/viva based on relative importance and criticality of function.</p> <p>This will facilitate the preparation of question bank/paper sets for the Qualification. Each of these paper sets/question banks created by the Assessment Agency will be validated by the industry subject matter experts of FFSC.</p> <p>The following tools are proposed to be used for the final assessment:</p> <ol style="list-style-type: none"> i. Written Test: This will comprise Multiple-Choice Questions. An online system for this will be preferred. ii. Practical Test: This will comprise a test job/ assignment to be done as per the briefing following appropriate working steps, using necessary tools, equipment, and instruments.

Through observation, it will be possible to ascertain the candidate's aptitude, attention to detail, quality consciousness, etc. The Assessor will measure the end product to gauge the level of his skill achievements.

iii. **Structured Interview/viva:** This tool will be used to assess the conceptual understanding and the behavioral aspects regarding the job role and the specific task at hand.

iv. Project Test:

During the training period, each trainee will be given a project to be developed within a given time frame. The same project will be evaluated on the assessment date by the Assessor.

- For each Qualification, assessment criteria have been developed, which describe the weightage for each NOS/Performance criteria (PC) and assigned marks based on each NOS separately
- The question bank will be developed by the subject matter experts to assess the theoretical and practical knowledge.
- The affiliated assessment agency will carry out the assessment process on the date proposed after completing the training.
- The result of the assessment will be shared by the assessment body to FFSC for review and compliance; after that result will be processed, and certificates will be generated.
- Assessments shall be conducted in the regional languages in case of any specific requirement from the concerned Training Institutions.
- For ensuring the impartial assessment, it will be ensured that the Assessment Agencies are not involved in any type of training delivery with respect to this project.

The detailed guideline and strategy can be referred at:

- Assessment Strategy (derived from Model curriculum)
- Evaluation matrix for Assessment Agencies
- Criteria of empanelment of Assessment Agencies

24. Assessment evidences

Assessment Guidelines and Assessment Weightage

Assessment Guidelines

1. The Sector Skill Council will create criteria for assessment for each Qualification Pack. Each Element/ Performance Criteria (PC) will be assigned marks proportional to its importance in NOS. SSC will also lay down the proportion of marks for Theory and Skills

Practical for each Element/ PC.

2. The assessment for the theory part will be based on the knowledge bank of questions created by the SSC.
3. Assessment will be conducted for all compulsory NOS, and where applicable, on the selected elective/option NOS/set of NOS.
4. Individual assessment agencies will create unique question papers for the theory part for each candidate at each examination/training centre (as per assessment criteria below).
5. Individual assessment agencies will create unique evaluations for skill practical for every student examination/ training centre based on these criteria.
6. To pass the Qualification Pack assessment, every trainee should score a minimum aggregate passing percentage of 70% for the QP and a minimum of 70% for each NOS.
7. In case of unsuccessful completion, the trainee may seek reassessment on the Qualification Pack.

Minimum Aggregate Passing % at QP Level: 70

(Please note: Every Trainee should score a minimum aggregate passing percentage as specified above to successfully clear the Qualification Pack assessment.)

Minimum Passing % at NOS Level: 70

(Please note: A Trainee must score the minimum percentage for each NOS separately as well as on the QP as a whole.)

Assessment Criteria

FFS/N2210: Assist in client coordination, team supervision, and quality check of the project

Assessment Criteria for Outcomes	Theory Marks	Practical Marks	Project Marks	Viva Marks
<i>Assist in coordinating with the client POCs and other agencies</i>	1	8	16	-
PC1. interpret the supervisor's instructions about the project requirement correctly regarding quality, style, material preference, etc.	1	2	4	-

PC2. interact with the client POC and other agencies for coordination of assigned tasks	-	2	4	-
PC3. prepare and maintain the required documents for project execution purposes	-	2	4	-
PC4. assist in the preparation of cost estimates and delivery timelines	-	2	4	-
<i>Assist in the supervision of teams and quality check during the project execution</i>	5	8	16	2
PC5. ensure that the assigned team understands the job cards and address their issues	1	2	4	-
PC6. ensure that the team follows all the health and safety guidelines	1	2	-	1
PC7. conduct a timely quality check of the work done by the team	1	2	4	-
PC8. ensure that the dimensions and ergonomics of the products are within the specified requirements	1	2	4	1
PC9. assist in training and mentoring of the team on various operations as required during project execution	1	-	4	-
<i>Conduct site survey and recce</i>	5	12	24	3
PC10. assist in planning for recce based on project requirements with supervisor	-	2	4	-
PC11. ensure proper logistics arrangements for conducting recce at the worksite	1	2	4	1
PC12. ensure the worksite is appropriately prepared and material required for survey/recce gets arranged timely	1	2	4	1
PC13. conduct the site survey as per the layout with assistance from the team	1	2	4	-

PC14. mark the worksite as per the layout and collaborate with teams to take measurements	1	2	4	1
PC15. analyze the measurement sheets and prepare the layouts	1	2	4	-
NOS Total	11	28	56	5

FFS/N2211: Ensure proper material management and preparation of the worksite

Assessment Criteria for Outcomes	Theory Marks	Practical Marks	Project Marks	Viva Marks
<i>Interpret project requirements</i>	2	6	6	1
PC1. interpret given drawings, optimizing the potential for efficient project execution with the supervisor	1	2	2	-
PC2. ensure selection of appropriate materials to comply with drawing and specifications	1	2	2	1
PC3. ensure daily filling and timely submission of job cards to the supervisor	-	2	2	-
<i>Assist in planning and prioritizing work activities</i>	5	-	10	-
PC4. assist in defining the process flow as per client/project needs during project execution	1	-	2	-
PC5. assist in the proper demarcation of people and resources with the supervisor	1	-	2	-
PC6. assist in creating schedules and rosters for the team to ensure they understand individual work requirements	1	-	2	-
PC7. maintain all the required documentation for project execution	1	-	2	-
PC8. maintain efficiency and productivity while performing role/responsibility	1	-	2	-

Ensure proper resource management at the worksite	5	14	12	6
PC9. plan and organize the loading/unloading/ handling of the materials as per the instruction sheet	-	2	2	-
PC10. ensure coordination with the various departments for material movement at multiple intervals	-	-	2	1
PC11. ensure the proper functioning of the handling equipment for material movement	1	2	2	1
PC12. select appropriate stacking method for easy identification and traceability	1	2	2	1
PC13. ensure the proper segregation and storage of materials, tools, and equipment at the worksite	1	2	2	1
PC14. ensure the use of suitable mediums to store or carry rivets, bolts, drift pins, etc.	-	2	-	-
PC15. comply with relevant health and safety legislation, regulations, and obligations	1	2	-	1
PC16. check the quality of the materials before loading and unloading at regular intervals	1	2	2	1
Ensure worksite preparation for fabrication, assembly, finishing, and installation purposes	5	12	12	4
PC17. ensure organization of all the necessary tools, materials, and equipment for the specified operations	1	2	2	1
PC18. ensure that the appropriate floor and machine guards are in place	1	2	2	1
PC19. install signage and barriers, as required, to maximize protection of public health and safety during project execution according to company requirements	1	2	2	1

PC20. implement security measures to control unauthorized access to the worksite	-	2	2	-
PC21. ensure the use of appropriate methods for worksite cleaning and maintenance of the tools and equipment at regular intervals	1	2	2	-
PC22. identify and prevent hazards and control risks at work site according to company requirements	1	2	2	1
NOS Total	17	32	40	11

FFS/N2212: Set-out, mark and fabricate the various components of the products at worksite

Assessment Criteria for Outcomes	Theor y	Practica l Marks	Projec t	Viva Marks
<i>Mark and measure various timber and timber-based materials</i>	4	14	14	4
PC1. check all tools and machines are in good working order and available/are on site	1	2	2	1
PC2. ensure proper selection of appropriate timber and timber-based materials	1	2	2	1
PC3. identify different components of the products as per the given specifications	-	2	2	-
PC4. prepare a cutting list of various components of the product based on materials and design specifications	-	2	2	-
PC5. perform the measurement and marking on timber and timber-based materials based on layout plan and cutting list	1	2	2	1
PC6. use geometric methods to determine complex angles, joints, and intersections from product drawings	1	2	2	1

PC7. ensure timely preparation and handover of the measurement sheet	-	2	2	-
<i>Perform woodworking operations on different components of the product</i>	2	14	16	2
PC8. select and safely use hand and power tools to cut and shape various components of the product	1	2	2	-
PC9. perform cutting of the wood/panels as per cutting list	-	2	2	-
PC10. ensure that the cut components are in line with the design specifications	-	2	2	-
PC11. prepare the wood/panels into the required shape as per the specified	-	2	2	-
PC12. prepare jigs or fixtures of required specifications to shape the various components of the product	1	-	2	-
PC13. ensure that all the measurements of the components meet specifications	-	2	2	-
PC14. perform cutting of laminate/veneer sheet to specified specifications and paste using adhesives on the surface of product	-	2	2	1
PC15. mark and drill the required holes and grooves for product assembly	-	2	2	1
<i>Fabricate internal and external joints for product assembly</i>	3	12	12	3
PC16. check and confirm the joint geometry conforms with the product drawing	1	2	2	1
PC17. undertake the preparation of accurate joints and intersections with no gaps	-	2	2	-
PC18. use appropriate hand tools and machines for joint preparation, e.g., traditional tenon saws, Japanese pull saws, band saw, powered hand router, and miter saw	1	2	2	1
PC19. prepare joints that are parallel, clean, and correct in size to the drawing	1	2	2	-

PC20. ensure faces, edges, and all shoulders are square straight and to the drawing	-	2	2	1
PC21. ensure proper checking of joints for strength and durability	-	2	2	-
NOS Total	9	40	42	9

FFS/N2213: Perform assembly, finishing, and installation of different components of the product at the worksite

Assessment Criteria for Outcomes	Theor y	Practical Marks	Project Marks	Viva Marks
<i>Assemble the various components of the product</i>	4	12	12	2
PC1. interpret the assembly drawings and use the appropriate method for assembly	-	2	2	-
PC2. measure the dimensions of various components of the product and perform marking operations to facilitate the assembly of components	1	2	2	1
PC3. ensure that the product components are assembled as per instruction using appropriate fasteners or/ add adhesives as applicable	1	2	2	1
PC4. ensure that the structures are assembled and erected accurately without damage to components	-	2	2	-
PC5. check the assembled components functioning as per the control plan, work instructions	1	2	2	-
PC6. ensure quality checks at regular intervals during assembly to avoid any defects/ error detection at a later stage	1	2	2	-
<i>Finish the surface of the product</i>	3	4	6	3
PC7. identify and select the appropriate wood fillers to finish the product to a specified standard	1	2	2	1

PC8. use appropriate tools to smoothen the surface (curves, edges, molds, etc.) of the product through sanding by machine and/or by hand to a specified standard	1	2	2	1
PC9. maintain the quality of the surface during assembly and installation, e.g., free from glue and any defects or chips	1	-	2	1
<i>Install the product along with hardware fittings</i>	5	8	12	2
PC10. check the location of the installation to prepare requisite cut-outs for electrical outlets, plumbing points, wiring, and other arrangements in the assembled product	1	-	2	-
PC11. identify and select the appropriate tools and equipment for installation of components/parts and sub-assemblies of the product	1	2	2	1
PC12. install the moldings/ finish accessories (crown molding, decorative panels, etc.) in accordance with the manual/instructions	-	2	2	-
PC13. install the furniture fittings (like locks, latch, closure, handles, etc.) in the finished product	1	2	2	-
PC14. ensure quality checks at regular intervals during installation to avoid any defects/ error detection at a later stage	1	2	2	-
PC15. supervise the cleaning of the installed product thoroughly before handover	1	-	2	1
<i>Perform quality check of the product before handover</i>	3	12	10	2
PC16. conduct post- completion quality check of the furniture and fitting in line with the organization practice	1	2	2	1
PC17. check and ensure that the final finish of the product is as per client requirement and design specification	-	2	-	-

PC18. inspect and mark the defects, if any, such as in paint, dents, grooves, cracks, rough edges, etc. on the physical body of the product	1	2	2	1
PC19. take appropriate action for fault rectification in consultation with supervisors	1	2	2	-
PC20. take note of inputs/ feedback received by supervisor /client to incorporate at the work	-	2	2	-
PC21. maintain all the requisite documents post completion of project in compliance with organization policies	-	2	2	-
NOS Total	15	36	40	9

FFS/N8203: Maintain health, safety, and greening practices at the worksite

Assessment Criteria for Outcomes	Theory Marks	Practical Marks	Project Marks	Viva Marks
<i>Maintain health and hygiene protocols</i>	6	8	16	5
PC1. comply with health and personal hygiene- related protocols	1	1	2	1
PC2. maintain adequate inventory of cleaning materials and consumables	1	1	2	1
PC3. identify and report poor organizational practices concerning hygiene, food handling, cleaning	1	1	2	-
PC4. ensure that the trash cans or waste collection points are cleared every day	1	1	2	1
PC5. maintain records for cleanliness and maintenance schedule	-	1	2	-

PC6. use appropriate personal protective equipment compatible with the work and compliant with relevant Occupational Health and Safety (OHS) guidelines: masks, safety glasses, head protection, ear muffs, safety footwear, gloves, aprons, etc.	1	1	2	1
PC7. wear clean clothes as per the dress code of the worksite	-	1	2	-
PC8. wash hands regularly using suggested material such as soap, one-use disposable tissue, warm water, etc.	1	1	2	1
<i>Dealing with emergencies</i>	3	4	8	3
PC9. use emergency equipment in accordance with manufacturers' specifications as per requirement	-	1	2	-
PC10. follow emergency and evacuation procedures in case of accidents, fires, natural calamities	1	1	2	1
PC11. respond promptly and appropriately to an accident situation or medical emergency	1	1	2	1
PC12. undertake first aid activities in case of an accident, if required and asked to do so	1	1	2	1
<i>Precautionary measures to avoid work hazards</i>	3	4	10	2
PC13. ensure that safety instructions applicable to the work place are being followed	-	1	2	-
PC14. monitor the usage of harmful chemicals inside the work area as per the specified guidelines only	1	1	2	-
PC15. plan out the routine cleaning of tools, machines, and equipment	-	1	2	-
PC16. employ an effective process to dispose off the hazardous material and wastage	1	1	2	1

PC17. employ safe working practices to perform a lift, carry or move heavy wooden furniture and accessories from one place to another	1	1	2	1
<i>Ensure material conservation and optimization of resources</i>	5	5	14	4
PC18. plan out the process to ensure optimal material utilization	1	1	2	1
PC19. collect information on the pattern of electricity and fuel consumption	-	1	2	-
PC20. identify possibilities of using renewable energy and environment-friendly fuels	1	1	2	-
PC21. plan the implementation of energy-efficient systems in a phased manner	-	1	2	1
PC22. plan and utilize the reusable materials and wastage in the process	1	1	2	1
PC23. perform segregation of waste based on the type of material	1	1	2	1
PC24. ensure to keep the electrical appliances in OFF position when not in use	1	1	2	-
NOS Total	17	21	48	14

FFS/N8204: Work effectively with the supervisors and co-workers involving gender and PwD sensitive practices

Assessment Criteria for Outcomes	Theory Marks	Practical Marks	Project Marks	Viva Marks
<i>Interaction with supervisors</i>	1	5	12	-
PC1. seek assistance and clarifications from supervisor or any such appropriate authority as and when required	-	1	2	-

PC2. interpret instructions clearly from superiors and respond effectively on the same	-	1	2	-
PC3. engage in decision making by providing relevant facts and figures	-	1	2	-
PC4. achieve productivity and quality of work as per the company procedure	1	-	2	-
PC5. follow escalation matrix in case of any grievance and report any unresolved problem to the supervisor immediately	-	1	2	-
PC6. document the completed work schedule in the desired format and handover to the supervisor	-	1	2	-
<i>Communicate effectively with co-workers</i>	2	7	14	2
PC7. coordinate and cooperate with colleagues to achieve work objectives	1	1	2	-
PC8. communicate to team members/ subordinates for appropriate work technique and method	-	1	2	-
PC9. communicate with co-workers clearly, concisely, and at a pace and in a manner that helps them to understand	-	1	2	1
PC10. maintain the etiquette, use polite language, demonstrate responsible and disciplined behaviours to the colleagues	1	1	2	1
PC11. pass on essential information to colleagues in line with organizational requirements	1	1	2	-
PC12. take the necessary initiatives to resolve the issues while working in team	-	1	2	-
PC13. prioritize team and organization goals above personal goals	-	1	2	-
<i>Follow gender and PwD sensitive practices at the worksite</i>	10	13	26	8
PC14. ensure a conducive environment for all the genders at the worksite	1	1	2	-

PC15. ensure gender neutral practices are followed at the worksite	1	1	2	1
PC16. communicate with everyone without any personal bias based on gender, disability, caste, religion, colour, sexual orientation, and culture	-	1	2	-
PC17. ensure equal participation of the people across different genders in the process	1	1	2	1
PC18. treat women equally across both the horizontal as well as vertical segregation of roles in the workplace	1	1	2	-
PC19. report incidents of any harassment and discrimination to the appropriate authority	1	1	2	1
PC20. practice appropriate verbal and non-verbal communication while interaction with persons with disability (PwD)	-	1	2	1
PC21. adapt communication styles and behaviour that are in line with the organisation's policies for people with disabilities	1	1	2	-
PC22. assist colleagues with disability in a manner without causing any damage to their self-respect	-	1	2	-
PC23. encourage appropriate behaviour and conduct with people across genders and PwD	1	1	2	1
PC24. identify relevant medical and infra support requirements for PwD.	1	1	2	1
PC25. ensure to adhere with the guidelines laid in Sexual Harassment of Women at Workplace (Prevention, Prohibition and Redressal) Act	1	1	2	1

PC26. the right way to use the laws, acts, and provisions defined for PwD by the statutory bodies	1	1	2	1
NOS Total	13	25	52	10

FFS/N8206: Undertake entrepreneurship and business development activities

Assessment Criteria for Outcomes	Theory Marks	Practical Marks	Project Marks	Viva Marks
<i>Understand entrepreneurial and business development activities</i>	10	14	32	-
PC1. identify the target customers and assess their needs and expectations concerning the quality and price of the products/ services	-	2	4	-
PC2. identify various types of furniture entrepreneurship/ business opportunities	2	2	4	-
PC3. ensure compliance with the government structural reforms and framework along with the applicable rules and regulations while setting up the enterprise/ business	2	2	4	-
PC4. undertake competition analysis to assess the market condition of a products/ services	2	-	4	-
PC5. conduct a risk assessment and identify opportunities for scaling up the business	2	2	4	-
PC6. develop a resource plan for the business and estimate costs for the same	-	2	4	-
PC7. identify avenues for relevant skills and knowledge development for oneself in preparation for entrepreneurial activity	2	2	4	-

PC8. identify personnel who can assist in supporting business development, by providing guidance and feedback	-	2	4	-
<i>Understand digital aspects of a business</i>	6	2	12	-
PC9. identify and select the suitable digital technologies for project implementation and promotions	2	-	4	-
PC10. analyze the different e-commerce opportunities available for product/service promotions	2	-	4	-
PC11. ensure effective utilization of social media platforms for promotions and marketing of the product/service	2	2	4	-
<i>Understand the financial aspects of a business</i>	4	4	16	-
PC12. implement processes that help in minimizing costs and maximizing profits	2	-	4	-
PC13. set a pricing strategy for the product/service based on the value of the product and modify pricing as and when required	2	-	4	-
PC14. prepare a basic business plan for the furniture entrepreneurship/ business activities	-	2	4	-
PC15. identify appropriate sources of funding for the furniture entrepreneurship/ business activities	-	2	4	-
NOS Total	20	20	60	-

1. Elective: Wooden Doors and Windows with Frames

FFS/N2214: Perform fabrication, assembly, and installation of Wooden Doors and Windows with Frames

Assessment Criteria for Outcomes	Theory Marks	Practical Marks	Project Marks	Viva Marks
<i>Prepare the resources for wooden doors and windows assemblage</i>	8	10	8	7
PC1. identify and select the timber based on design specifications of the given door/window	1	1	1	1
PC2. maintain the moisture content of the timber within specified limits	1	1	1	1
PC3. plan and organize required materials, tools, and equipment for door/window fabrication and installation	1	1	1	1
PC4. check that the selected tools and equipment are in safe working condition and ready for use	1	1	-	1
PC5. verify dimensions and type of the opening are as per the size of the frame	1	1	-	-
PC6. perform the required woodworking operation on the materials as per design specifications	1	1	1	1
PC7. measure the dimensions of the door/window panel to ensure the correct size of the frame	1	1	1	1
PC8. prepare the material pieces into the required shape as per the specified measurements	-	1	1	-1
PC9. check visually for any surface damage on the components before assembly and installation processes	1	1	1	1
PC10. ensure that the work area is free of clutters to carry out installation work smoothly	-	1	1	1
<i>Install flashings for door and window frames</i>	4	6	6	3

PC11. identify suitable flashing materials to be used with frame installation	1	1	1	-
PC12. plan out the installation of flashing with suitable overlapping of sides to avoid water spillage	-	1	1	-
PC13. mark the measurement on the flashing for frame installation and trim the extra pieces	1	1	1	1
PC14. make use of the bottom to top approach while installing flashings	1	1	1	1
PC15. ensure proper pasting of flashing using small flat block, tapping, and running down on the frame	-	1	1	-
PC16. apply sealants at the exposed edges and corners once the flashings get installed on the frame	1	1	1	1
<i>Perform assembly and installation of wooden doors, windows, and frames</i>	5	8	8	4
PC17. ensure correct methods of holding and centering the work piece	1	1	1	-
PC18. ensure the use of appropriate lifting devices for lifting doors/ windows	1	1	1	1
PC19. grout the gap between the wall and the door frame, if required, perform chipping and chiseling of the masonry structure	-	1	1	1
PC20. ensure proper alignment of the door/window frame against the setting out the lines	1	1	1	1
PC21. install the door/window frame and sub- frame as per specification	-	1	1	-
PC22. install the door/window panels as per the given design specifications	-	1	1	-

PC23. ensure a consistent gap between door/window panel and door/window frame	1	1	1	-
PC24. ensure the miter joints are flat and square at corners for a seamless finish	1	1	1	1
<i>Install architectural hardware, fittings, and accessories</i>	5	6	6	6
PC25. interpret the product drawing and identify the type of hardware and accessories required for the doors and windows installation	1	1	1	1
PC26. identify and use required tools and equipment for installation of hardware and accessories	1	1	1	1
PC27. measure and mark the dimensions on the product to determine hardware positioning	1	1	1	1
PC28. make provisions for the installation of fittings by preparing slots	-	1	1	1
PC29. install hardware and accessories in accordance with the job and manufacturer specifications	1	1	1	1
PC30. ensure the proper functioning of the hardware after installation and make necessary adjustments as required	1	1	1	1
NOS Total	22	30	28	20

2. Elective: Wooden Cladding and Panelling

FFS/N2215: Perform fabrication, assembly, and installation of Wooden Cladding and Panelling

Assessment Criteria for Outcomes	Theory Marks	Practical	Project	Viva Mark
<i>Prepare the resources for cladding/ panelling assemblage</i>	10	22	2	8

PC1. identify and select the timber based on design specifications	1	2	2	1
PC2. maintain the moisture content of the timber within specified limits	1	2	2	1
PC3. plan and organize required materials, tools, and equipment for cladding/ panelling fabrication and installation	1	2	2	1
PC4. check that the selected tools and equipment are in safe working condition and ready for use	1	2	2	1
PC5. interpret the quantity of the panels required for the room based on design specifications	1	2	2	1
PC6. ensure proper measurement of every length, opening, bulge, and recess of the room/area	1	2	2	1
PC7. identify the types of adhesives to be used based on the condition of the wall and area of installation	1	2	-	1
PC8. perform the required woodworking operation on the materials as per design	1	2	2	-
PC9. prepare the material pieces into the required shape as per the specified measurements	1	2	2	-
PC10. check visually for any surface damage on the components before assembly and installation	1	2	2	1
PC11. ensure that the work area is free of clutters to carry out installation work	1	2	2	-
<i>Perform assembly and installation of cladding/ panelling</i>	5	16	1 8	1
PC12. measure and mark the dimension of the panels on the wall to determine the installation position	1	2	2	1

PC13. ensure proper joinery of panels to avoid gaps and loose pieces while accommodating the natural seasonal movement of the timber	-	2		
PC14. make provision for drained and ventilated cavity open at the top and bottom to prevent moisture into the	-	2		
PC15. ensure correct methods of holding and centering the workpiece	1	2		
PC16. check the vertical and horizontal alignment of panels using appropriate tools	1	2		
PC17. undertake requisite cut-outs for electrical outlets, plumbing points, and other arrangements	-	2		
PC18. ensure removal of masking tape after installation of panels	1	-		
PC19. apply sealants at the exposed edges and corners once the panels get	1	2	2	-
PC20. ensure a final sanding of panels and edges to get a finished look	-	2	2	-
NOS Total	15	38	38	9

3. Elective: Wooden Flooring

FFS/N2216: Perform fabrication, assembly, and installation of Wooden Flooring

Assessment Criteria for Outcomes	Theory Marks	Practical Marks	Project Marks	Viva Marks
<i>Prepare the resources for flooring assemblage</i>	8	11	22	6
PC1. identify and select the timber based on design specifications	1	1	2	1
PC2. maintain the moisture content of the timber within specified limits	1	1	2	1

PC3. plan and organize required materials, tools, and equipment for flooring fabrication and installation	1	1	2	1
PC4. check that the selected tools and equipment are in safe working condition and ready for use	1	1	2	1
PC5. interpret the quantity of the panels required for the room based on design specifications	1	1	2	1
PC6. ensure proper measurement of every length, opening, bulge, and recess of the room/area	1	1	2	1
PC7. identify the types of adhesives to be used based on the condition of the wall and area of installation	1	1	2	-
PC8. perform the required woodworking operation on the materials as per design specifications	-	1	2	-
PC9. prepare the material pieces into the required shape as per the specified measurements	-	1	2	-
PC10. check visually for any surface damage on the components before assembly and installation processes	1	1	2	-
PC11. ensure that the work area is free of clutters to carry out installation work smoothly	-	1	2	-
<i>Perform assembly and installation of flooring</i>	5	14	28	6
PC12. check the sub-floor to make sure that there are no squeaks in the floor and make necessary arrangements, if required	1	1	2	1
PC13. roll out the strips of vapor barrier paper and staple securely to the sub-floor	-	1	2	1
PC14. make use of the installation approach, which focuses on the largest unobstructed wall	1	1	2	-

PC15. ensure correct methods of holding and centering the workpiece	1	1	2	-
PC16. ensure the alignment of the board edge with the guiding line and drill holes as per specified measurements	-	1	2	1
PC17. make use of the pneumatic nail gun, placing the gun lip over the edge of the board and driving the staple into the tongue of the hardwood plank	1	1	2	1
PC18. install the panels of the flooring as per drawing specification	-	1	2	-
PC19. ensure proper grain matching while installation of panels	-	1	2	-
PC20. check for the end matching of the panels while assembling of panels	-	1	2	-
PC21. check the vertical and horizontal alignment of panels using appropriate tools	-	1	2	-
PC22. undertake requisite cut-outs for electrical outlets, plumbing points, and other arrangements	-	1	2	-
PC23. ensure removal of masking tape after installation of panels	-	1	2	-
PC24. apply sealants at the exposed edges and corners once the panels get installed	-	1	2	1
PC25. ensure a final sanding of panels and edges to get a finished look	1	1	2	1
NOS Total	13	25	50	12

4. Elective: Kitchen, Cabinets, and Beds

FFS/N2217: Perform fabrication, assembly, and installation of Kitchen, Cabinets, and Beds

Assessment Criteria for Outcomes	Theory Marks	Practical Marks	Project Marks	Viva Mark
<i>Prepare the resources for cabinets assemblage</i>	6	10	20	4
PC1. identify and select the timber and panels based on design specifications	1	1	2	1
PC2. maintain the moisture content of the timber within specified limits	1	1	2	1
PC3. plan and organize required materials, tools, and equipment for cabinets fabrication and installation	1	1	2	1
PC4. check that the selected tools and equipment are in safe working condition and ready for use	1	1	2	1
PC5. identify different components of the products as per the given	-	1	2	-
PC6. prepare a cutting list of various components of the product based on materials and design specifications	1	1	2	-
PC7. perform the required woodworking operation on the materials as per design	-	1	2	-
PC8. prepare the material pieces into the required shape as per the specified measurements	-	1	2	-
PC9. check visually for any surface damage on the components before assembly and installation	1	1	2	-
PC10. ensure that the work area is free of clutters to carry out installation work smoothly	-	1	2	-
<i>Perform assembly and installation of kitchen, cabinets, and beds</i>	3	10	22	2

PC11. ensure correct methods of holding and centering the workpiece	-	1	2	-
PC12. ensure all parts are in desired sizes and thickness as per design requirements	1	1	2	1
PC13. measure and mark the position of cabinet installation on the wall	1	1	2	1
PC14. assemble and install the panels of the cabinets as per drawing specification	-	1	2	-
PC15. make use of the pneumatic nail gun, placing the gun lip over the edge of the board and driving the staple into the tongue of the panel	-	1	2	-
PC16. ensure proper grain matching while installation of panels	-	1	2	-
PC17. check for the end matching of the panels while assembling of panels	-	1	2	-
PC18. check the vertical and horizontal alignment of panels using appropriate tools	-	1	2	-
PC19. undertake requisite cut-outs for electrical outlets, plumbing points, and other arrangements	-	1	2	-
PC20. ensure removal of masking tape after installation of panels	1	-	2	-
PC21. prepare the necessary mounting for furniture to be installed	-	1	2	-
<i>Install architectural hardware, fittings, and accessories</i>	3	6	12	2
PC22. interpret the product drawing and identify the type of hardware and accessories required for cabinets installation	-	1	2	-
PC23. identify and use required tools and equipment for installation of hardware and accessories	1	1	2	1
PC24. measure and mark the dimensions on the product to determine hardware positioning	1	1	2	1

PC25. make provisions for the installation of fittings by preparing slots and cut-outs	-	1	2	-
PC26. install hardware and accessories in accordance with the job and manufacturer specifications	-	1	2	-
PC27. ensure the proper functioning of the hardware after installation and make necessary adjustments as required	1	1	2	-
NOS Total	12	26	54	8

5. Elective: Wooden House Structure

FFS/N2218: Perform fabrication, assembly, and installation of a Wooden House Structure

Assessment Criteria for Outcomes	Theory Marks	Practical Marks	Project Marks	Viva Marks
<i>Prepare the resources for wooden structure assemblage</i>	8	13	26	7
PC1. identify and select the timber and panels based on design specifications	1	1	2	1
PC2. maintain the moisture content of the timber within specified limits	1	1	2	1
PC3. plan and organize required materials, tools, and equipment for wooden structure fabrication and installation	1	1	2	1
PC4. identify different components of the products as per the given specifications	-	1	2	-
PC5. prepare a cutting list of various components of the product based on materials and design specifications	-	1	2	-

PC6. apply woodwork skills to measure, mark out, cut, joint, fit the pieces of the structure	1	1	2	1
PC7. prepare the material pieces into the required shape as per the specified measurements	-	1	2	-
PC8. design the repetitive framing members to withstand the load of the	1	1	2	-
PC9. select the framing type of the structure based on required design specifications	1	1	2	1
PC10. plan house layouts and room sizes for efficient use of space and to avoid excessive building area and heated volume	-	1	2	-
PC11. identify and select the framing method, depth, and spacing of members based on insulation levels of the structure	1	1	2	1
PC12. check visually for any surface damage on the components before assembly and installation processes	1	1	2	1
PC13. ensure that the work area is free of clutters to carry out installation work smoothly	-	1	2	-
<i>Perform assembly and installation of wooden structure</i>	8	11	22	5
PC14. ensure that the repetitive framing members such as trusses or wood I-joists spaced as per standard sizes	1	1	2	1
PC15. perform laying of the sill plate based on the level of the foundation top	-	1	2	-
PC16. prepare the thickness of the sheathing panels based on the amount of structural strength requirement	1	1	2	-

PC17. prepare a connection between the roof/ floor, wall, and foundation to provide a continuous and complete load path	-	1	2	-
PC18. factor the loads on the subfloor and floor by placing the joist with a bow edgewise in a crown on top position	1	1	2	1
PC19. install the joists based on the clearance under the wood beam	-	1	2	-
PC20. select and install the sub-floor based on floor stiffness and vibration requirement	1	1	2	-
PC21. apply appropriate adhesives to reduce the deflection between adjacent joints	1	1	2	1
PC22. install insulation carefully on top of the soffit finish preventing air leakage through the cantilevered floor assembly	1	1	2	1
PC23. follow the code-acceptable practices that use fewer framing materials such as advanced framing techniques	1	1	2	1
PC24. ensure a final sanding of panels and edges to get a finished look	1	1	2	-
NOS Total	16	24	48	12

6. Elective: General Repairs and Maintenance

FFS/N2219: Perform General Repairs and Maintenance of the furniture at the worksite

Assessment Criteria for Outcomes	Theory Marks	Practical Marks	Project Marks	Viva Marks
<i>Prepare the resources for dismantling, repair, and maintenance of furniture</i>	2	5	10	2

PC1. examine and identify the various components of the existing furniture to determine the scope of repair and maintenance	-	1	2	-
PC2. plan and organize required materials, tools, and equipment for furniture repair and restoration	1	1	2	1
PC3. check that the selected tools and equipment are in safe working condition and ready for use	1	1	2	1
PC4. measure the various components of the furniture to determine the product specifications	-	1	2	-
PC5. ensure that the work area is free of clutters to carry out work smoothly	-	1	2	-
<i>Dismantling and movement of various components of furniture</i>	5	11	14	-
PC6. ensure that the furniture should be emptied from inside before dismantling	-	1	-	-
PC7. follow the approach of dismantling the parts in order of assembling them at last at the end of the process	-	1	2	-
PC8. dismantle and detach sofa legs, bookcase shelves, beds, and anything else that needs repair or maintenance	-	1	2	-
PC9. ensure proper stacking of all the labeled parts neatly to avoid scratches and other types of damages	1	1	2	-
PC10. ensure proper arrangement of small parts like screws and other fasteners after dismantling of furniture	1	1	-	-
PC11. plan and organize the movement/displacement of the furniture and its parts	-	1	2	-
PC12. examine the surroundings and the route whereby the furniture is to be moved	1	1	2	-

PC13. identify potential troubles like light fixtures which can be damaged during moving or detaching the furniture	1	1	2	-
PC14. clear the route by moving or removing fragile or obstructive items	-	1	-	-
PC15. make use of soft padding or wrap the furniture in a blanket pad to protect it	-	1	-	-
PC16. perform lifting and movement based on the type of furniture and its compositions to avoid any mishaps	1	1	2	-
<i>Maintain, repair, and re-install the furniture</i>	7	16	24	4
PC17. plan out the repair and maintenance process in accordance with the scope of the work	-	1	2	-
PC18. perform stripping of the old and damaged layer of the furniture using a scrapper based on repair requirements	-	1	2	-
PC19. repair the joints or cracks in furniture using appropriate adhesives and clamp the joints, if required	1	1	2	1
PC20. prepare the material pieces into the required shape as per the specified measurements	-	1	2	-
PC21. perform sanding on the surface of the components to remove small scratches and marks	1	1	2	-
PC22. tighten the various components of furniture together using appropriate steel brackets and screws	-	1	2	-
PC23. perform reupholstering of the furniture using suitable padding and fabric as per requirement	1	1	2	1
PC24. assemble and install the panels of the furniture as per product specification	-	1	2	-

PC25. ensure proper grain matching while installation of panels	-	1	2	-
PC26. check the vertical and horizontal alignment of panels using appropriate tools	-	1	2	-
PC27. identify and select appropriate polishes and waxes on furniture based on the type of wood/panels	1	1	2	1
PC28. ensure the proper functioning of the hardware after furniture assembly and make necessary adjustments as required.	1	1	2	1
PC29. evaluate if surface or coating is not susceptible to be damaged by the contact required in cleaning and polishing	-	1	-	-
PC30. perform dusting and cleaning carefully using appropriate tools and equipment	1	1	-	-
PC31. ensure that only unfinished wood, painted wood, or wood with a sturdy finish should be cleaned using appropriate water-soluble solutions	1	1	-	-
PC32. carefully wipe off the dust on the furniture using a damp cloth	-	1	-	-
NOS Total	14	32	48	6

Assessment Weightage

Compulsory NOS

National Occupational Standards	Theory Marks	Practical Marks	Project Marks	Viva Marks	Total Marks	Weightage
FFS/N2210. Assist in client coordination, team supervision, and quality check of the project	11	28	56	5	100	15
FFS/N2211. Ensure proper material management and preparation of the worksite	17	32	40	11	100	15
FFS/N2212. Set-out, mark and fabricate the various components of the products at worksite	9	40	42	9	100	15
FFS/N2213. Perform assembly, finishing, and installation of different components of the product at the worksite	15	36	40	9	100	15
FFS/N8203. Maintain health, safety, and greening practices at the worksite	17	21	48	14	100	5
FFS/N8204.	13	25	52	10	100	5

Work effectively with the supervisors and co-workers involving gender and PwD sensitive practices						
FFS/N8206. Undertake entrepreneurship and business development activities	20	20	60	-	100	5
Total	102	202	338	58	700	75

Elective: 1 Wooden Doors and Windows with Frames

National Occupational Standards	Theory Marks	Practical Marks	Project Marks	Viva Marks	Total Marks	Weightage
FFS/N2214. Perform fabrication, assembly, and installation of Wooden Doors and Windows with Frames	22	30	28	20	100	25
Total	22	30	28	20	100	25

Elective: 2 Wooden Cladding and Panelling

National Occupational Standards	Theory Marks	Practical Marks	Project Marks	Viva Marks	Total Marks	Weightage
FFS/N2215.						

Perform fabrication, assembly, and installation of Wooden Cladding and Panelling	15	38	38	9	100	25
Total	15	38	38	9	100	25

Elective: 3 Wooden Flooring

National Occupational Standards	Theory Marks	Practical Marks	Project Marks	Viva Marks	Total Marks	Weightage
FFS/N2216. Perform fabrication, assembly, and installation of Wooden Flooring	13	25	50	12	100	25
Total	13	25	50	12	100	25

Elective: 4 Kitchen, Cabinets, and Beds

National Occupational Standards	Theory Marks	Practical Marks	Project Marks	Viva Marks	Total Marks	Weightage
FFS/N2217. Perform fabrication, assembly, and installation of Kitchen, Cabinets, and Beds	12	26	54	8	100	25
Total	12	26	54	8	100	25

Elective: 5 Wooden House Structure

National Occupational Standards	Theory Marks	Practical Marks	Project Marks	Viva Marks	Total Marks	Weightage
FFS/N2218. Perform fabrication, assembly, and installation of a Wooden House	16	24	48	12	100	25
Total	16	24	48	12	100	25

Elective: 6 General Repairs and Maintenance

National Occupational Standards	Theory Marks	Practical Marks	Project Marks	Viva Marks	Total Marks	Weightage
FFS/N2219. Perform General Repairs and Maintenance of the furniture at the worksite	14	32	48	6	100	25
Total	14	32	48	6	100	25

NSQF QUALIFICATION FILE

SECTION 2

25. EVIDENCE OF LEVEL

OPTION B

Title/Name of qualification/component: Carpenter Level: 4		
NSQF Domain	Key requirements of the job role	How the job role relates to the NSQF level descriptors
Process NSQF Level Descriptor: Work in familiar, predictable, routine, situation of clear choice	Following is the few processes wise key requirements of the job role: <ul style="list-style-type: none">- Assist in client coordination, team supervision, and quality check of the project- Interpret project requirements- Assist in planning and prioritizing work activities- Ensure proper resource management at the worksite- Ensure the worksite preparation for fabrication, assembly, finishing and installation process	As mentioned in the key requirements, the person carries out the different tasks in a familiar, routine and situation with a clear choice. The job requirements match with the NSQF level 4 descriptor. Hence the level is pegged at 4.
Professional knowledge NSQF Level Descriptor: Factual knowledge of field or study	Following are the few professional knowledge requirements of the job role: <ul style="list-style-type: none">- About different tools and hardware, terminology, pictorial representation, symbols etc.- Basics of preparing and interpreting 2D/ 3D drawings, terminology, pictorial representation,	According to the key requirements, the person the person should have knowledge about basic facts, and knowledge required for the job role. The job requirements match with the NSQF level 4 descriptor. Hence, the level is kept as 4.

NSQF QUALIFICATION FILE

	<p>symbols etc. related to architectural drawings and specifications</p> <ul style="list-style-type: none"> - Correct use of handling tools, equipment, hardware and fittings in the assembly and installation process - Process of handling and stacking different types of materials, tools and equipment - Different types of storage appropriate to the type of material, tools and equipment - Packing methods for each material - Health, safety norms at workplace - Waste disposal procedures and guidelines - Standard process and principle of various operations of the worksite 	
<p>Professional skill</p> <p>NSQF Level Descriptor: Recall and demonstrate practical skill, routine, and repetitive in narrow range of application, using appropriate rule and tool, using</p>	<p>Following are the few professional skills required for the job role</p> <ul style="list-style-type: none"> - Preparation of the work area for recce - Identification and maintenance of the tools and materials - Ensure the execution of various stages involved in project execution, from client interaction to the project handover 	<p>The person demonstrates his/ her practical skills, which are routine and repetitive in a narrow range of applications.</p> <p>The job requirements match with the NSQF level 4 descriptor. Therefore, the level is pegged at 4.</p>

NSQF QUALIFICATION FILE

quality concepts.	<ul style="list-style-type: none"> - Identification of suitable timber based on type, requirement, coding, area of application etc. - Measurement and marking the timber and timber-based materials - Making joints and assembly of the products - Finishing of the surface of the product - Installation of the product as per the design - Working at the workplace as per the guideline 	
<p>Core skill</p> <p>NSQF Level Descriptor: Language to communicate written or oral, with required clarity, skill to basic arithmetic and algebraic principles, basic understanding of social political and natural environment.</p>	<p>The job role demands that the person should be able to understand and possess the skills such as:</p> <ul style="list-style-type: none"> - Read and understand the measurements, understands instructions and standard operating procedures - Understand basic principles of measurement, geometry, and arithmetic and algebraic calculation - Read and understand company policy documents; information displayed at the worksite 	<p>The person understands the basic arithmetic and algebraic principle, basic understanding of social and natural environments. He/she is able to communicate by writing and speaking.</p> <p>The job requirements match with the NSQF level 4 descriptor. Therefore, the level is kept as 4.</p>

NSQF QUALIFICATION FILE

	<ul style="list-style-type: none"> - Communicate with team members and supervisor - Understands basics of banking - Identify risks that affect the health, safety, and environment for self and others while working in the vicinity 	
Responsibility NSQF Level Descriptor: Responsibility for own work and learning	Few of the key responsibilities: <ul style="list-style-type: none"> - Work constructively and collaboratively with others - Apply domain knowledge/ information and assess day to day tasks through experience and observation - Use reasoning skills to make appropriate decisions and troubleshoot concerns related to own responsibilities 	The person has responsibility for his/ her own work and learning. The job requirements match with the NSQF level 4 descriptor. Hence the level is kept at 4.

SECTION 3

EVIDENCE OF NEED

26	<p>What evidence is there that the Qualification is needed? What is the estimated uptake of this Qualification and what is the basis of this estimate?</p>
<p>Basis</p>	<p>In the case of SSC</p>
<p>Need of the Qualification</p>	<p>FFSC follows an intensive, detailed process for Qualification development, which requires industry involvement at each level. FFSC has an Industry-led Sub-Committee, called the “FFSC’s Board of Standards (BoS),” dedicated to the development of Qualifications. BoS is formed with the support of the elected members of the Governing Council and Honorary Members from the Academic Institutions. Further, FFSC has a “National Occupational Standards (NOS) Group” comprising of Subject Matter Experts of various domains who work on developing Qualifications specific to sub-sector and occupations.</p> <p>FFSC also involves a minimum of 30 industry stakeholders for the development of the Qualifications.</p> <p>In addition, the skill requirement study conducted by Boston Consulting Group (BCG) in 2020 has indicated the furniture industry is growing and is expected to grow at 7-8% and 13-18% CAGR, respectively, for Home and Office Furniture. The furniture market is majorly dominated by the unorganized sector. The sector is witnessing strong growth due to increased construction activities in metro cities and tier-II cities, changing lifestyles, increasing disposable income, along changing consumer aspirations.</p> <p>FFSC also conducted a skill gap study to understand the need for the Qualification. According to the Skill Gap Report:</p> <ul style="list-style-type: none"> • Manpower during 2016-17: 3,12,202 • Estimated for 2022: 6,16,231 • Estimated for 2025: 8,65,760 • Gap during 2022: 3,05,029 • Gap during 2025: 5,53,558

NSQF QUALIFICATION FILE

		Skill Gap Studies are attached as Supporting document.
	Industry Relevance	FFSC has taken validations of the job roles from 32 industry bodies. The Qualification has been developed based on relevance and inputs of the industry. The details of industry validation, attached as supporting documents.
	Usage of the Qualification	The usage of the Qualification will be found in both organized and unorganized sub-sectors of the furniture industry. It will be used for reskilling, fresh skilling, upskilling training in schools, colleges, in-house training purposes, and basic apprenticeship programs etc.
	Estimated uptake	FFSC has conducted research, analysis, and assessment of skill gaps in the furniture industry. Therefore, the estimation of the requirement of manpower has to be done based on the findings of the skill gap study and secondary research. <ul style="list-style-type: none"> • Manpower during 2016-17: 3,12,202 • Estimated uptake for 2022: 6,16,231 • Estimated uptake for 2025: 8,65,760
27	Recommendation from the concerned Line Ministry of the Government/Regulatory Body. To be supported by documentary evidence FFSC has approached the concerned Line Ministry for the recommendations. The concurrence of Line Ministry concurrence is attached as supporting file.	
28	What steps were taken to ensure that the Qualification (s) does (do) not duplicate already existing or planned qualifications in the NSQF? Give justification for presenting a duplicate qualification Furniture Sales, Installation and After Sales is one of the sub-sector of FFSC. Earlier FFSC has developed NSQC approved Qualifications namely Assistant Carpenter- Wooden Furniture (Level-3) and Lead Carpenter- Wooden Furniture (Level-4). These Qualifications were valid till 30 th September 2021. However, these Qualifications got extended till 31 st March 2021. Currently, FFSC is working on developing new Qualifications for the sector. FFSC has checked this Qualification of Carpenter for any duplication across the sectors. Given that Qualification is a niche to the Furniture sector, there is no duplication or pre-existing similar qualifications available in other sectors. No existing course was found with the same content and duration in National Qualification Registrar as well.	

NSQF QUALIFICATION FILE

	This Qualification was developed keeping in mind the industry requirements after consultation with the stakeholders.
29	<p>What arrangements are in place to monitor and review the Qualification (s)? What data will be used, and at what point will the Qualification (s) be revised or updated? Specify the review process here</p> <p>The qualification packs will be reviewed and checked for relevance as per industry standards after 3 years.</p> <p>Any institution/ individual can send feedback, which will be considered during the next review cycle. In addition, communication will be sent for feedback to all the major stakeholders before reviewing the qualifications. The Qualification will also be uploaded to the website of FFSC for feedback and suggestions for the review process.</p>

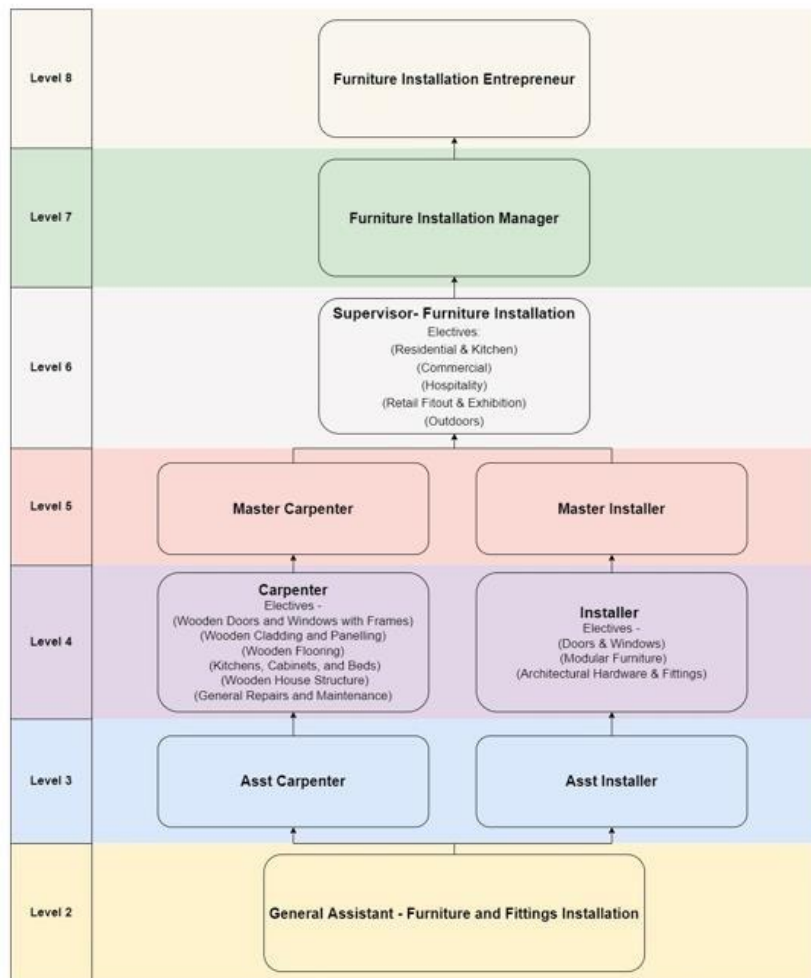
SECTION 4

EVIDENCE OF PROGRESSION

30	<p>What steps have been taken to design this or other qualifications to ensure that there is a clear path to other qualifications in this sector?</p> <p><i>Show the career map here to reflect the clear progression</i></p> <p>Online sessions, one to one meeting with industry experts were carried out to understand the career progression. In addition, the skill gap study of FFSC and secondary reports was also referred to understand the progression.</p>
----	---

NSQF QUALIFICATION FILE

Career Map for Furniture Installation Job Roles NSQF Level 2-8



NSQF QUALIFICATION FILE

Occupational Map

For further horizontal mobility, the detailed occupational map can be referred (attached as Supporting document).

Sub-Sectors		Furniture Sales, Installation & After Sales			
Occupations		Furniture Installation		Furniture After Sales & Restoration	
Occupation #		22		23	
Level 10	Leadership	CEO			
Level 9	Sr Mgmt	GM, Furniture Installation		GM, Furniture After Sales & Restoration	
Level 8	Mid Mgmt	Furniture Installation Entrepreneur		After Sales & Restoration Entrepreneur	
Level 7	Mid Mgmt	Furniture Installation Manager		Furniture After Sales & Restoration - Manager	
Level 6	Jr Mgmt	Supervisor - Furniture Installation Electives:		Supervisor - Furniture Customer Support	Supervisor - Furniture Restoration
Level 5	Jr Mgmt	Master Carpenter	Master Installer	Lead Furniture Customer Support	Lead Furniture Restorer
Level 4	Entry	Carpenter Electives - (Wooden Doors & Windows with Frames) (Wooden Cladding & Panellings) (Wooden Floorings) (Kitchen, Cabinets & Beds) (Wooden House Structure) (General Repairs and Maintenance)	Lead Installer Electives - (Doors & Windows) (Modular Furniture) (Architectural Hardware & Fittings)	Furniture Customer Support Officer	Furniture Restorer
Level 3	Entry	Asst Carpenter	Asst Installer	Asst Furniture Customer Support	Asst Furniture Restorer
Level 2	Entry	General Assistant - Furniture & Fittings Installation		Trainee - Furniture After Sales	Trainee - Furniture Restoration
Level 1	Entru				